

Compensation Planting – Supporting Notes

1.1 Planting is proposed :

- to compensate for the loss of existing landscape resources and character resulting from the construction of the proposed improvement works ;
- to screen sensitive views, and
- as an environmental benefit to local residents, workers, recreational users and tourists.

1.2 All land disturbed during the course of the works, that will not subsequently be occupied by the permanent works, will be planted with either native woodland or scrub species. As a general approach, where these areas lie within or alongside areas of existing woodland then woodland species will be planted. In areas bordered by tall and low scrub, then appropriate scrub species will be established.

1.3 The steepness of slopes poses a constraint on the species that can be planted, however. Slopes with a gradient of not more than 35 degrees would be suitable for the establishment of tall tree species, and slopes in excess of 45 degrees would not be appropriate for small tree and tall scrub species. Soil cut slopes in excess of 55-60 degrees would not be suitable for the establishment of vegetation and would be hydro-mulched to provide a green appearance.

1.4 The limit of disturbance has been contained as far as is practical to the alignment of the new and widened carriageways. This results in only a very limited amount of space for re-planting. As the road is bordered for the most part by scrub or woodland habitats, there are very few opportunities for additional planting in areas outside the limit of disturbance.

1.5 Additional infill planting is also proposed in several open areas alongside the new or existing road corridors, where existing low scrub vegetation would be enhanced with the addition of native tree species.

1.6 In determining the quantity of the compensation planting for ecological mitigation, reference has been made to the area of land available for planting, and its ability to support different types of vegetation (especially restriction of tree planting on steep slopes). Approximately 14.5ha of habitat will be lost as a result of the Tung Chung Road Widening project and a general approach of providing compensation planting more than the area lost has been proposed. Details of the proposed planting are given in Table 1 below. Further details of the species to be used in the planting can be seen in Tables 2 and 3.

1.7 The landscape proposal for this project is also shown in the attached figures

Table 1 Proposed Planting

Planting Type	Area (ha)	Description
Native woodland planting	12.0 ha	Newly formed slopes and reinstated disturbed areas alongside existing areas of secondary woodland, plantation woodland or tall scrub. Grass hydro-seeding with native grass seed mix and groundcover plants, with pit planting of native tree species at 1.5 metre centres
Infill planting	12.5 ha	Planting of native woodland tree species in open areas of low scrub to improve ecological diversity. Estimated that some 2000 no. new trees per hectare could be planted in this manner
Grass hydroseeding with Groundcover plants, or hydro-mulching	0.55 ha	Rehabilitation of existing steep slopes by grass hydro-seeding with native grass seed mix and groundcover plants or by hydro-mulching
Individual trees	321 no.*	Heavy Standard trees planted in flat ground, or pavement tree pits alongside the road
Amenity shrub planting	0.4 ha	Ornamental shrub planting in planter beds alongside the road.
TOTAL	25.45ha	

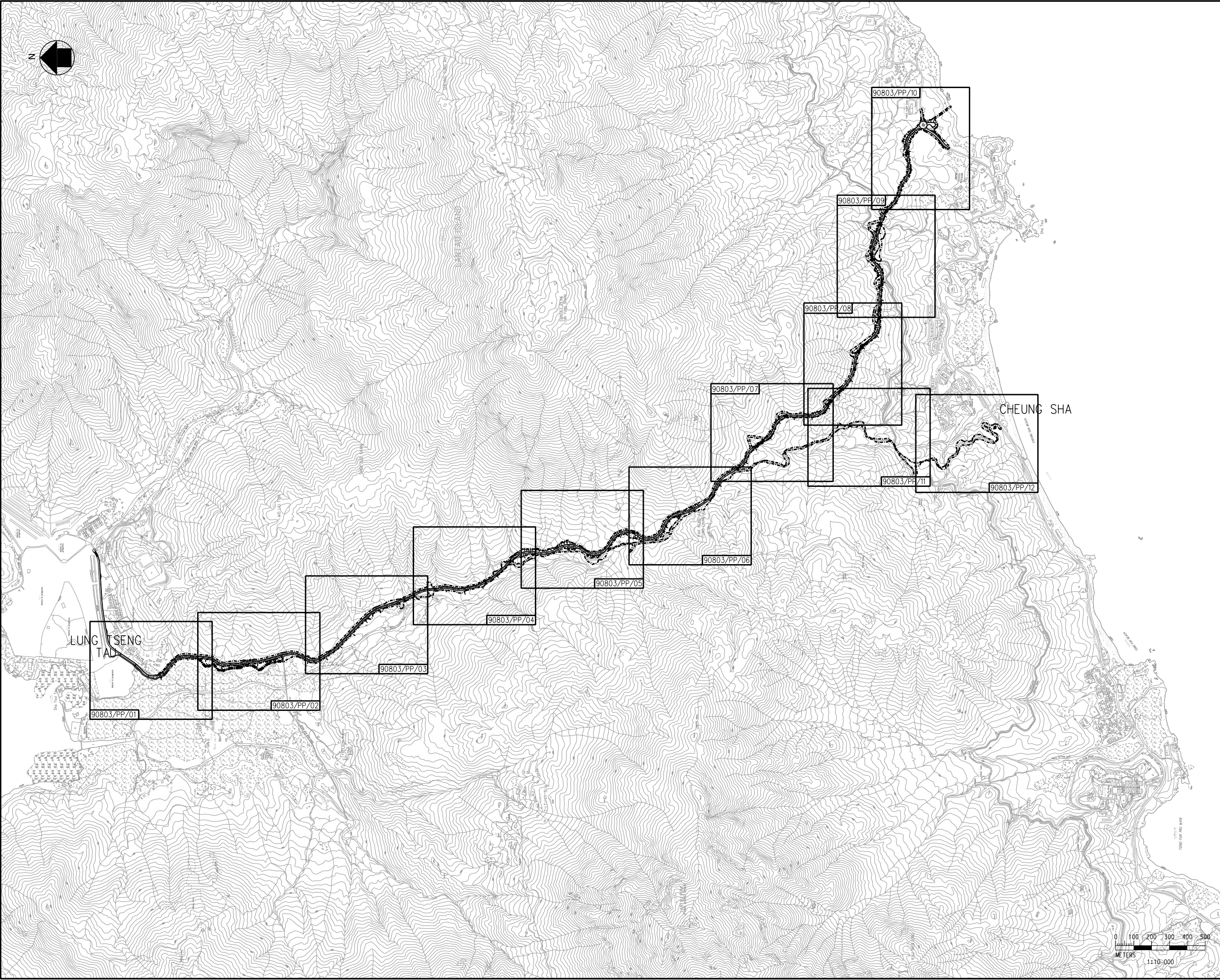
*not included in area total


Table 2 Proposed Woodland and Scrub Planting Species

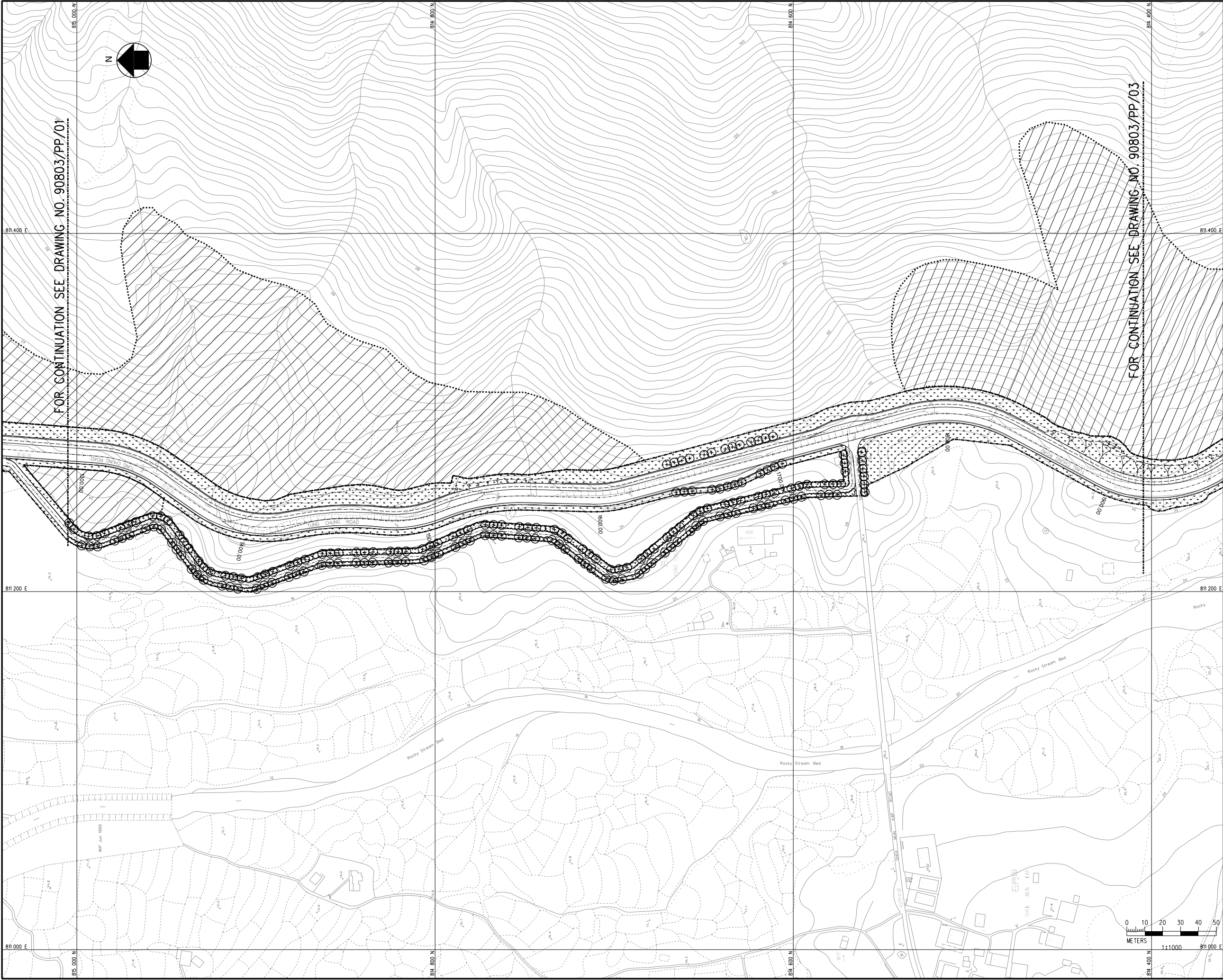
Species	Form	Native Woodland Planting	Native Scrub Planting	Infill Planting of Plantation Woodland	Infill Planting of Existing Scrub Areas
<i>Ardisia crenata</i>	Shrub	x	x		
<i>Artocarpus hypargyrea</i>	Tree	x		x	x
<i>Baeckea frutescens</i>	Shrub		x		
<i>Bauhinia blakeana</i>	Tree	x			
<i>Bridelia tomentosa</i>	Tree	x		x	x
<i>Brucea japonica</i>	Shrub		x		
<i>Castanopsis fissa</i>	Tree	x		x	x
<i>Celtis tetrandra</i>	Tree			x	
<i>Cratoxylum ligustrinum</i>	Tree	x		x	x
<i>Diospiros vaccinioides</i>	Shrub		x		
<i>Enkianthus quinqueflorus</i>	Shrub		x		
<i>Eurya nitida</i>	Shrub		x		
<i>Ficus hispida</i>	Tree	x			x
<i>Ficus microcarpa</i>	Tree	x			
<i>Ficus virens</i>	Tree			x	x
<i>Gardenia jasminoides</i>	Shrub		x		
<i>Gordonia axillaris</i>	Tree	x	x	x	
<i>Ilex rotunda</i>	Tree			x	
<i>Ligustrum sinense</i>	Shrub	x	x	x	
<i>Liquidamber formosana</i>	Tree	x			
<i>Litsea glutinosa</i>	Tree	x	x	x	
<i>Macaranga tanarius</i>	Tree	x			
<i>Machilus breviflora</i>	Tree	x		x	x
<i>Machilus chekiangensis</i>	Tree	x		x	x
<i>Mallotus paniculatus</i>	Tree	x			x
<i>Phyllanthus emblica</i>	Shrub		x		
<i>Psychotria asiatica</i>	Shrub	x	x		
<i>Rhaphiolepis indica</i>	Shrub	x	x		
<i>Rhodomyrtus tomentosa</i>	Shrub	x	x		
<i>Rhus hypoleuca</i>	Tree	x		x	x
<i>Rhus succedanea</i>	Tree	x		x	x
<i>Sapium discolor</i>	Tree	x			
<i>Schefflera octophylla</i>	Tree	x		x	x
<i>Sterculia lanceolata</i>	Tree	x		x	x
<i>Ternstroemia gymnanthera</i>	Tree	x		x	x
<i>Trema tomentosa</i>	Shrub		x		
<i>Zanthoxylum avicennae</i>	Tree	x		x	x

Table 3 Other Proposed Planting Species

Groundcovers / Climbers	Grass Species
<i>Dalbergia millettii</i>	<i>Cynodon dactylon</i>
<i>Ipomoea cairica</i>	<i>Digitaria longifolia</i>
<i>Lonicera confusa</i>	<i>Eleusine indica</i>
<i>Passiflora foetida</i>	<i>Eragrostis tenella</i>
<i>Smilax glabra</i>	<i>Eremochloa ciliaris</i>
<i>Strophanthus divaricatus</i>	<i>Eremochloa ophiuroides</i>
<i>Millettia nitida</i>	<i>Eualia quadrinervis</i>
<i>Zanthoxylum nitidum</i>	<i>Fimbristylis spathacea</i>
<i>Millettia nitida</i>	<i>Ischaemum indicum</i>
	<i>Miscanthus floridulus</i>
Ferns	<i>Paspalum conjugatum</i>
<i>Dicranopteris pedata</i>	<i>Rottboellia exaltata</i>
<i>Dryopteris championii</i>	<i>Scleria ciliaris</i>
<i>Pteris ensiformis</i>	<i>Scleria levis</i>



REV	ISSUE STAT	AMENDMENT	BY	CHK.	APP.	DATE
-	-	-				-
CLIENT						
 HIGHWAYS DEPARTMENT THE GOVERNMENT OF THE HONG KONG SPECIAL ADMINISTRATIVE REGION						
AGREEMENT No.						
CE 13/2001						
PROJECT						
IMPROVEMENT TO TUNG CHUNG ROAD BETWEEN LUNG TSENG TAU AND CHEUNG SHA INVESTIGATION AND PRELIMINARY DESIGN ASSIGNMENT						
TITLE						
PLANTING PLAN KEY PLAN						
 Mouchel Asia Limited Consulting Engineers 萬碩亞洲顧問工程公司						
DRAWN AK		DATE 12.2001		REV.		
CHECKED MP		DATE 12.2001		-		
APPROVED MP		DATE 12.2001		-		
CAD FILE No.		PP-00		-		
SCALE		1:10000 IN A1 1:20000 IN A3		-		
FIRST ISSUED		12.2001		DRAWING No.		90803/PP/00
COPYRIGHT RESERVED 版權所有 不得翻印						




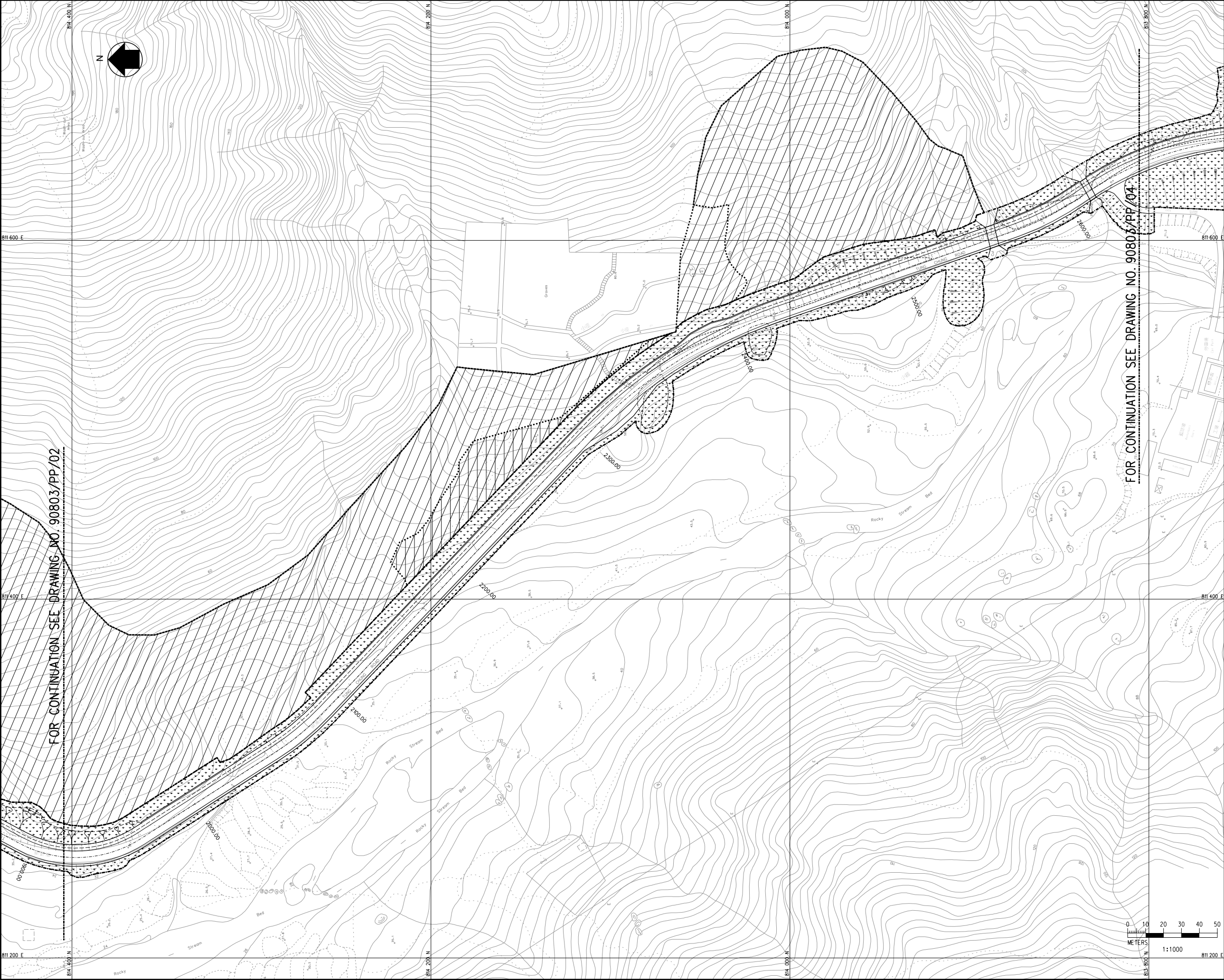
LEGEND :

- EXTENT OF WORKS AREA
- INFILL PLANTING WITH AREAS OF SCRUB WITH NATIVE WOODLAND TREE SPECIES
- NATIVE WOODLAND PLANTING
- GRASS HYDROSEEDING WITH GROUND COVER PLANTS
- INDIVIDUAL TREES (HEAVY STANDARD SIZE)
- AMENITY SHRUB PLANTING

NOTE :

ANY NEWLY FORMED OR REHABILITATED SLOPE WHICH FOR GEOTECHNICAL REASONS NEEDS A HARD SURFACE COVER, SHALL RECEIVE GRASS HYDROMULCHING WITH GROUND COVER PLANTING TO CREATE A GREEN VEGETATIVE SURFACE.

REV.	ISSUE STAT.	AMENDMENT	BY	CHK.	APP.	DATE
-	-	-	-	-	-	-
CLIENT						
 HIGHWAYS DEPARTMENT THE GOVERNMENT OF THE HONG KONG SPECIAL ADMINISTRATIVE REGION						
AGREEMENT No. CE 13/2001						
PROJECT						
IMPROVEMENT TO TUNG CHUNG ROAD BETWEEN LUNG TSENG TAU AND CHEUNG SHA INVESTIGATION AND PRELIMINARY DESIGN ASSIGNMENT						
TITLE						
PLANTING PLAN						
(SHEET 2 OF 12)						
 Mouchel Asia Limited Consulting Engineers 萬碩亞洲顧問工程公司						
DRAWN AK		DATE		12.2001		
CHECKED MP		DATE		12.2001		
APPROVED MP		DATE		12.2001		
CAD FILE No.		PP-02		SCALE		
1:1000 IN A1		1:2000 IN A3		FIRST ISSUED 12.2001		
DRAWING No.		90803/PP/02		REV.		
COPYRIGHT RESERVED 版權所有 不得翻印						



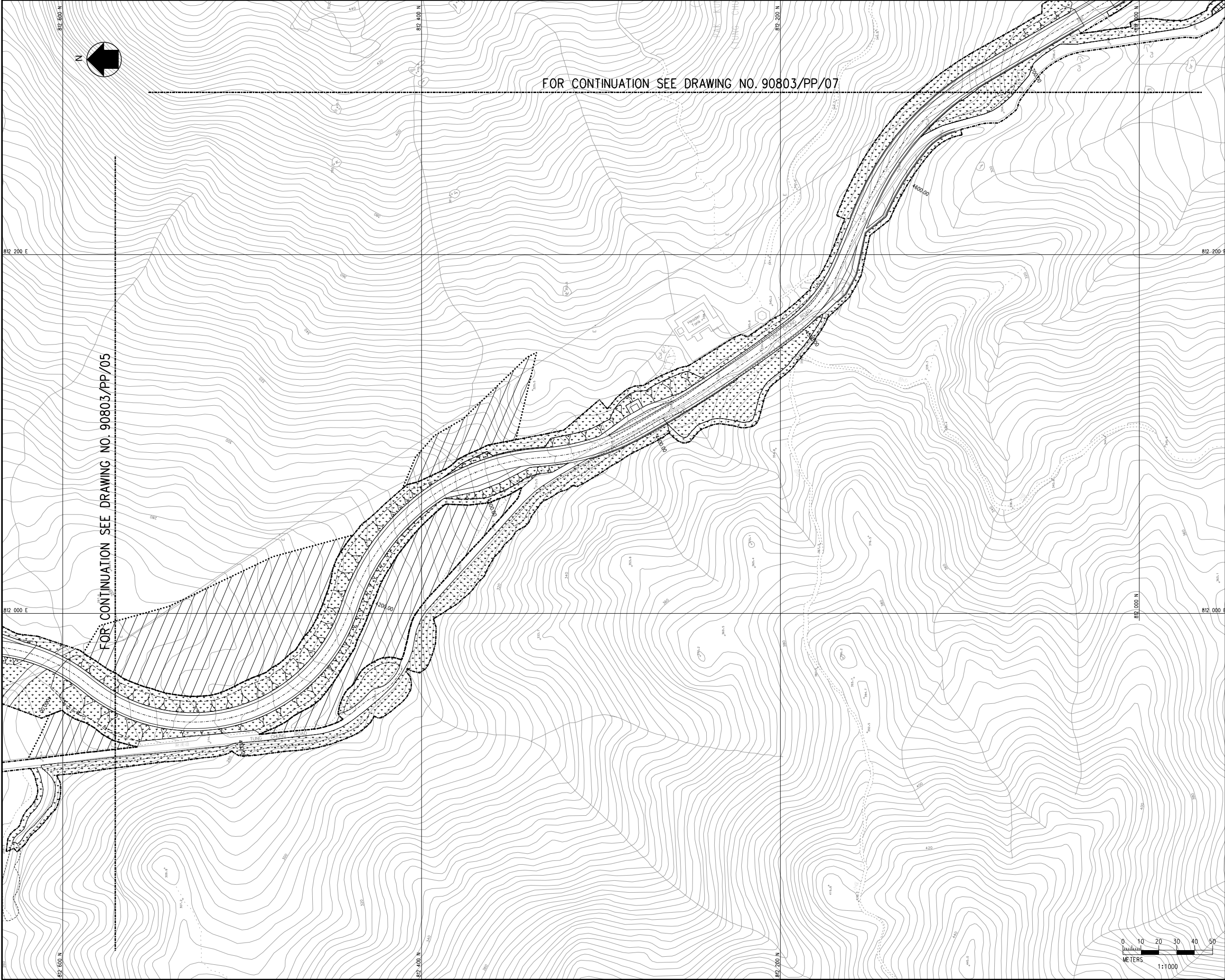
LEGEND :

- EXTENT OF WORKS AREA
- INFILL PLANTING WITH AREAS OF SCRUB WITH NATIVE WOODLAND TREE SPECIES
- NATIVE WOODLAND PLANTING
- GRASS HYDROSEEDING WITH GROUND COVER PLANTS
- INDIVIDUAL TREES (HEAVY STANDARD SIZE)
- AMENITY SHRUB PLANTING

NOTE :

ANY NEWLY FORMED OR REHABILITATED SLOPE WHICH FOR GEOTECHNICAL REASONS NEEDS A HARD SURFACE COVER, SHALL RECEIVE GRASS HYDROMULCHING WITH GROUND COVER PLANTING TO CREATE A GREEN VEGETATIVE SURFACE.

-	-		-				-	
REV.	ISSUE STAT		AMENDMENT		BY	CHK.	APP.	DATE
CLIENT		HIGHWAYS DEPARTMENT THE GOVERNMENT OF THE HONG KONG SPECIAL ADMINISTRATIVE REGION						
AGREEMENT No.		CE 13/2001						
PROJECT		IMPROVEMENT TO TUNG CHUNG ROAD BETWEEN LUNG TSENG TAU AND CHEUNG SHA INVESTIGATION AND PRELIMINARY DESIGN ASSIGNMENT						
TITLE		PLANTING PLAN						
		(SHEET 3 OF 12)						
Mouchel Mouchel Asia Limited Consulting Engineers 萬碩亞洲顧問工程公司				DRAWN	AK	DATE	12.2001	
				CHECKED	MP	DATE	12.2001	
				APPROVED	MP	DATE	12.2001	
				CAD FILE No.		PP-03		
				SCALE	1:1000 IN A1 1:2000 IN A3			
FIRST ISSUED		12.2001		DRAWING No.		REV.		
©COPYRIGHT RESERVED 版權所有 不得翻印		90803/PP/03				-		



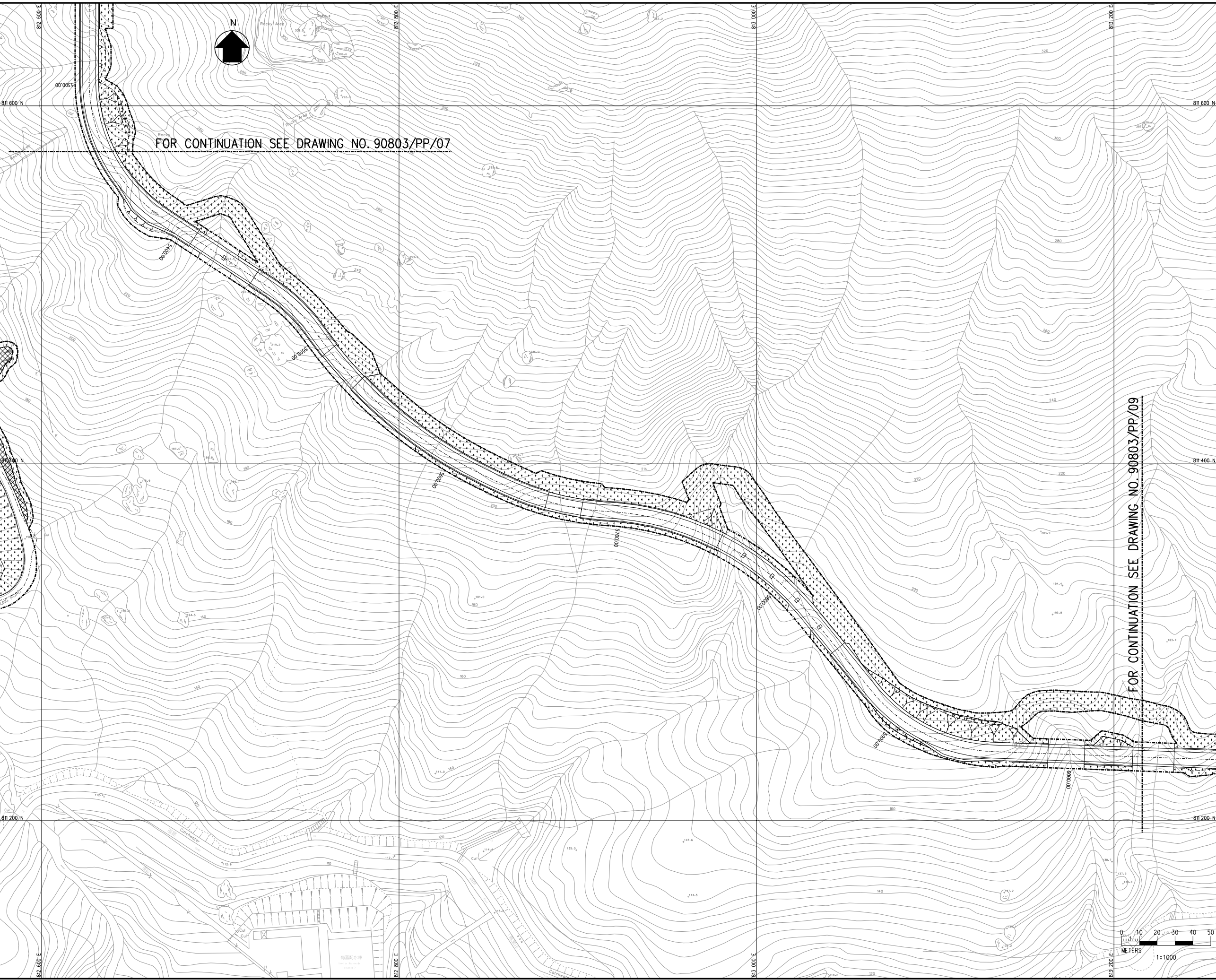
LEGEND :

- EXTENT OF WORKS AREA
- INFILL PLANTING WITH AREAS OF SCRUB WITH NATIVE WOODLAND TREE SPECIES
- NATIVE WOODLAND PLANTING
- GRASS HYDROSEEDING WITH GROUND COVER PLANTS
- INDIVIDUAL TREES (HEAVY STANDARD SIZE)
- AMENITY SHRUB PLANTING

NOTE :

ANY NEWLY FORMED OR REHABILITATED SLOPE WHICH FOR GEOTECHNICAL REASONS NEEDS A HARD SURFACE COVER, SHALL RECEIVE GRASS HYDROMULCHING WITH GROUND COVER PLANTING TO CREATE A GREEN VEGETATIVE SURFACE.

REV.	ISSUE STAT.	AMENDMENT	BY	CHK.	APP.	DATE
-	-	-	-	-	-	-
CLIENT						
HIGHWAYS DEPARTMENT THE GOVERNMENT OF THE HONG KONG SPECIAL ADMINISTRATIVE REGION						
AGREEMENT No.						
CE 13/2001						
PROJECT						
IMPROVEMENT TO TUNG CHUNG ROAD BETWEEN LUNG TSENG TAU AND CHEUNG SHA INVESTIGATION AND PRELIMINARY DESIGN ASSIGNMENT						
TITLE						
PLANTING PLAN						
(SHEET 6 OF 12)						
Mouchel						
Mouchel Asia Limited Consulting Engineers						
萬碩亞洲顧問工程公司						
DRAWN			DATE		REV.	
AK			12.2001		-	
CHECKED			DATE			
MP			12.2001			
APPROVED			DATE			
MP			12.2001			
CAD FILE No.			PP-06			
SCALE			1:1000 IN A1 1:2000 IN A3			
FIRST ISSUED			12.2001			
DRAWING No.			90803/PP/06			
COPYRIGHT RESERVED 版權所有 不得翻印						



FOR CONTINUATION SEE DRAWING NO. 90803/PP/07


FOR CONTINUATION SEE DRAWING NO. 90803/PP/09

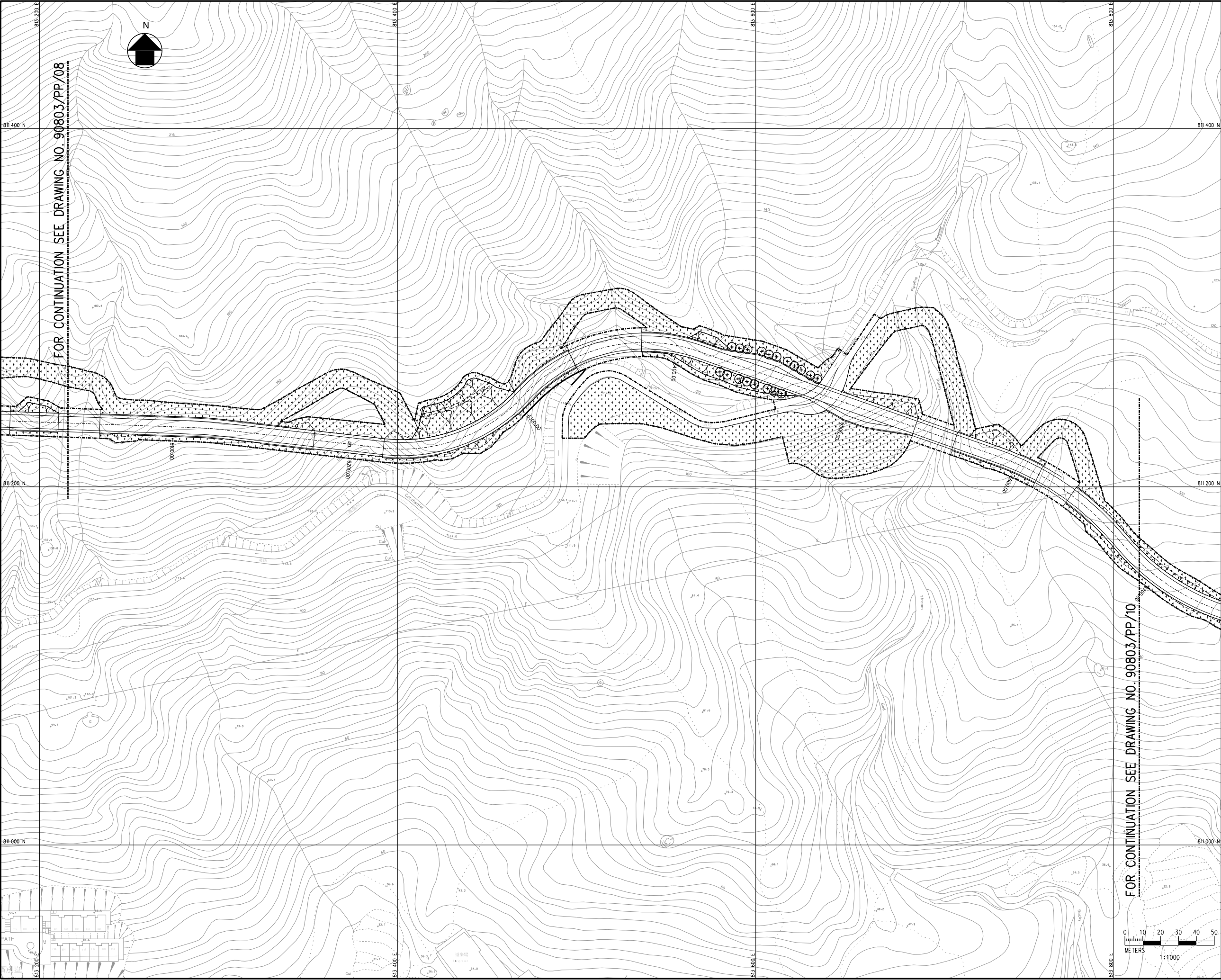
LEGEND :

- EXTENT OF WORKS AREA
- INFILL PLANTING WITH AREAS OF SCRUB WITH NATIVE WOODLAND TREE SPECIES
- NATIVE WOODLAND PLANTING
- GRASS HYDROSEEDING WITH GROUND COVER PLANTS
- INDIVIDUAL TREES (HEAVY STANDARD SIZE)
- AMENITY SHRUB PLANTING

NOTE :

ANY NEWLY FORMED OR REHABILITATED SLOPE WHICH FOR GEOTECHNICAL REASONS NEEDS A HARD SURFACE COVER, SHALL RECEIVE GRASS HYDROMULCHING WITH GROUND COVER PLANTING TO CREATE A GREEN VEGETATIVE SURFACE.

-	-	-	-	-	-	-	-
REV.	ISSUE	STAT	AMENDMENT	BY	CHK.	APP.	DATE
CLIENT							
		HIGHWAYS DEPARTMENT THE GOVERNMENT OF THE HONG KONG SPECIAL ADMINISTRATIVE REGION					
AGREEMENT No.				CE 13/2001			
PROJECT							
IMPROVEMENT TO TUNG CHUNG ROAD BETWEEN LUNG TSENG TAU AND CHEUNG SHA INVESTIGATION AND PRELIMINARY DESIGN ASSIGNMENT							
TITLE							
PLANTING PLAN							
(SHEET 8 OF 12)							
<h1>Mouchel</h1> <p>Mouchel Asia Limited Consulting Engineers</p> <p>萬碩亞洲顧問工程公司</p>				DRAWN	AK	DATE	12.2001
				CHECKED	MP	DATE	12.2001
				APPROVED	MP	DATE	12.2001
				CAD FILE No.		PP-08	
				SCALE		1:1000 IN A1 1:2000 IN A3	
FIRST ISSUED		12.2001		DRAWING No.		90803/PP/08	
COPYRIGHT RESERVED 版權所有 不得翻印						REV.	
						-	




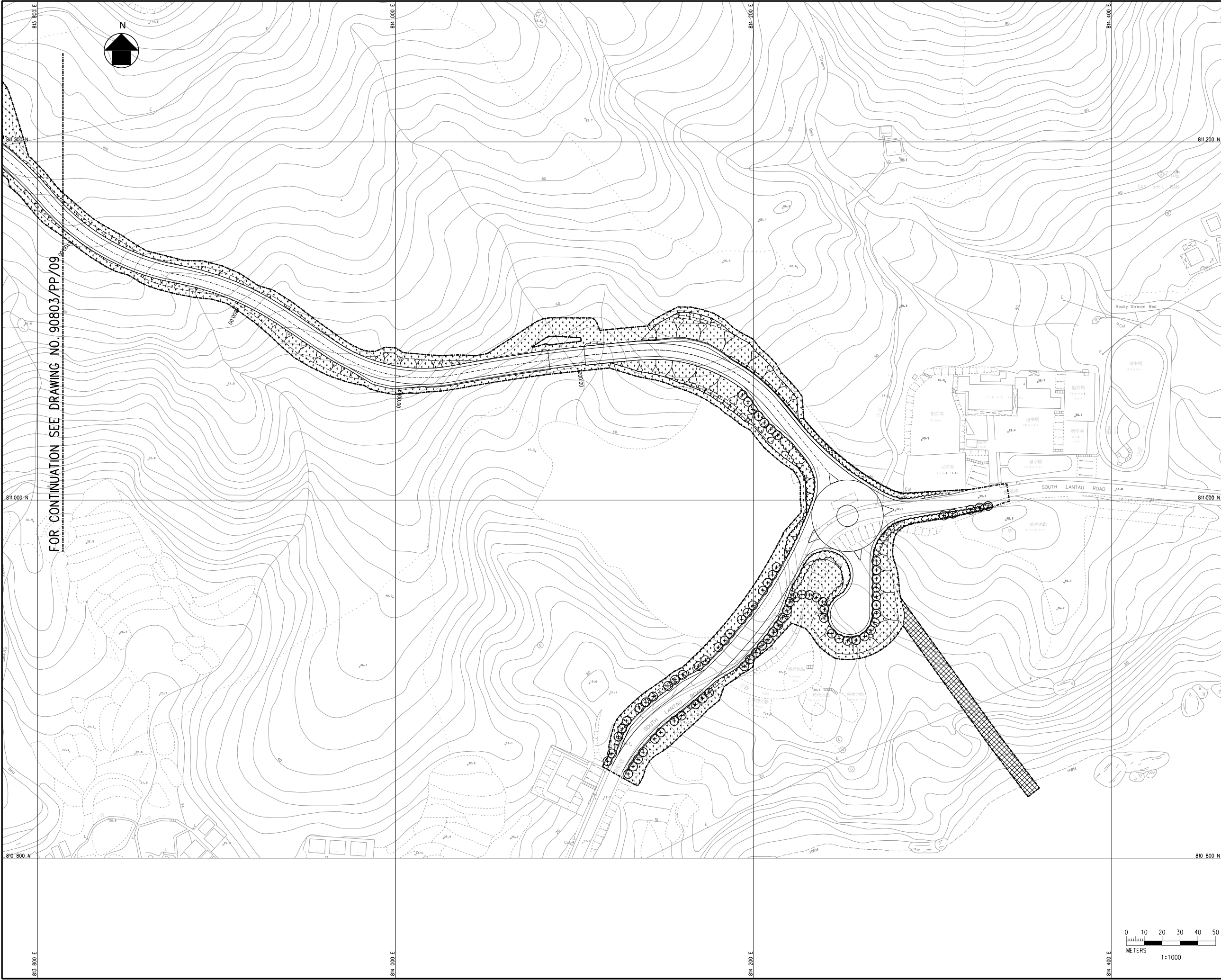
LEGEND :

- EXTENT OF WORKS AREA
- INFILL PLANTING WITH AREAS OF SCRUB WITH NATIVE WOODLAND TREE SPECIES
- NATIVE WOODLAND PLANTING
- GRASS HYDROSEEDING WITH GROUND COVER PLANTS
- INDIVIDUAL TREES (HEAVY STANDARD SIZE)
- AMENITY SHRUB PLANTING

NOTE :

ANY NEWLY FORMED OR REHABILITATED SLOPE WHICH FOR GEOTECHNICAL REASONS NEEDS A HARD SURFACE COVER, SHALL RECEIVE GRASS HYDROMULCHING WITH GROUND COVER PLANTING TO CREATE A GREEN VEGETATIVE SURFACE.

-	-		-						-
REV.	ISSUE STAT	AMENDMENT				BY	CHK.	APP.	DATE
CLIENT		<div></div> <div>HIGHWAYS DEPARTMENT THE GOVERNMENT OF THE HONG KONG SPECIAL ADMINISTRATIVE REGION</div>							
AGREEMENT No.		CE 13/2001							
PROJECT		IMPROVEMENT TO TUNG CHUNG ROAD BETWEEN LUNG TSENG TAU AND CHEUNG SHA INVESTIGATION AND PRELIMINARY DESIGN ASSIGNMENT							
TITLE		PLANTING PLAN							
		(SHEET 9 OF 12)							
<div>Mouchel</div> <div>Mouchel Asia Limited Consulting Engineers</div> <div>萬碩亞洲顧問工程公司</div>						DRAWN	DATE		
						AK	12.2001		
						CHECKED	DATE		
						MP	12.2001		
						APPROVED	DATE		
						MP	12.2001		
CAD FILE No.						PP-09			
SCALE						1:1000 IN A1 1:2000 IN A3			
FIRST ISSUED		12.2001		DRAWING No.		90803/PP/09			
©COPYRIGHT RESERVED 版權所有 不得翻印									
						REV.		-	



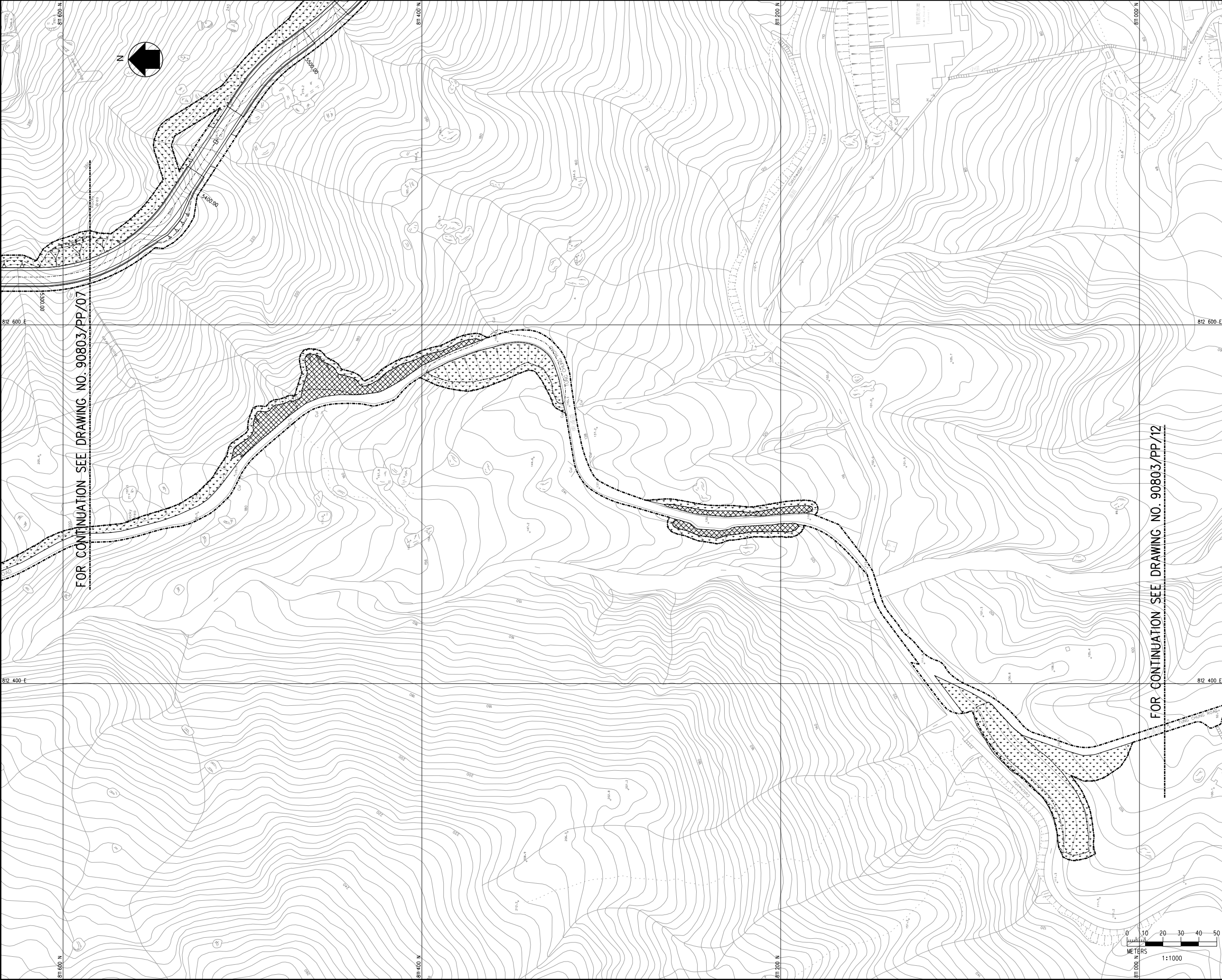
LEGEND :

- EXTENT OF WORKS AREA
- INFILL PLANTING WITH AREAS OF SCRUB WITH NATIVE WOODLAND TREE SPECIES
- NATIVE WOODLAND PLANTING
- GRASS HYDROSEEDING WITH GROUND COVER PLANTS
- INDIVIDUAL TREES (HEAVY STANDARD SIZE)
- AMENITY SHRUB PLANTING

NOTE :

ANY NEWLY FORMED OR REHABILITATED SLOPE WHICH FOR GEOTECHNICAL REASONS NEEDS A HARD SURFACE COVER, SHALL RECEIVE GRASS HYDROMULCHING WITH GROUND COVER PLANTING TO CREATE A GREEN VEGETATIVE SURFACE.

REV.	ISSUE	STAT.	AMENDMENT	BY	CHK.	APP.	DATE
-	-	-	-	-	-	-	-
CLIENT		HIGHWAYS DEPARTMENT THE GOVERNMENT OF THE HONG KONG SPECIAL ADMINISTRATIVE REGION					
AGREEMENT No.		CE 13/2001					
PROJECT		IMPROVEMENT TO TUNG CHUNG ROAD BETWEEN LUNG TSENG TAU AND CHEUNG SHA INVESTIGATION AND PRELIMINARY DESIGN ASSIGNMENT					
TITLE		PLANTING PLAN					
DRAWN		DW	DATE	(SHEET 10 OF 12)			
CHECKED		MP	DATE				
APPROVED		MP	DATE				
CAD FILE No.		PP-10					
SCALE		1:1000 IN A1 1:2000 IN A3					
FIRST ISSUED		12.2001	DRAWING No.	90803/PP/10			
COPYRIGHT RESERVED 版權所有 不得翻印				REV.			
				-			



LEGEND :


- EXTENT OF WORKS AREA
- INFILL PLANTING WITH AREAS OF SCRUB WITH NATIVE WOODLAND TREE SPECIES
- NATIVE WOODLAND PLANTING
- GRASS HYDROSEEDING WITH GROUND COVER PLANTS
- INDIVIDUAL TREES (HEAVY STANDARD SIZE)
- AMENITY SHRUB PLANTING

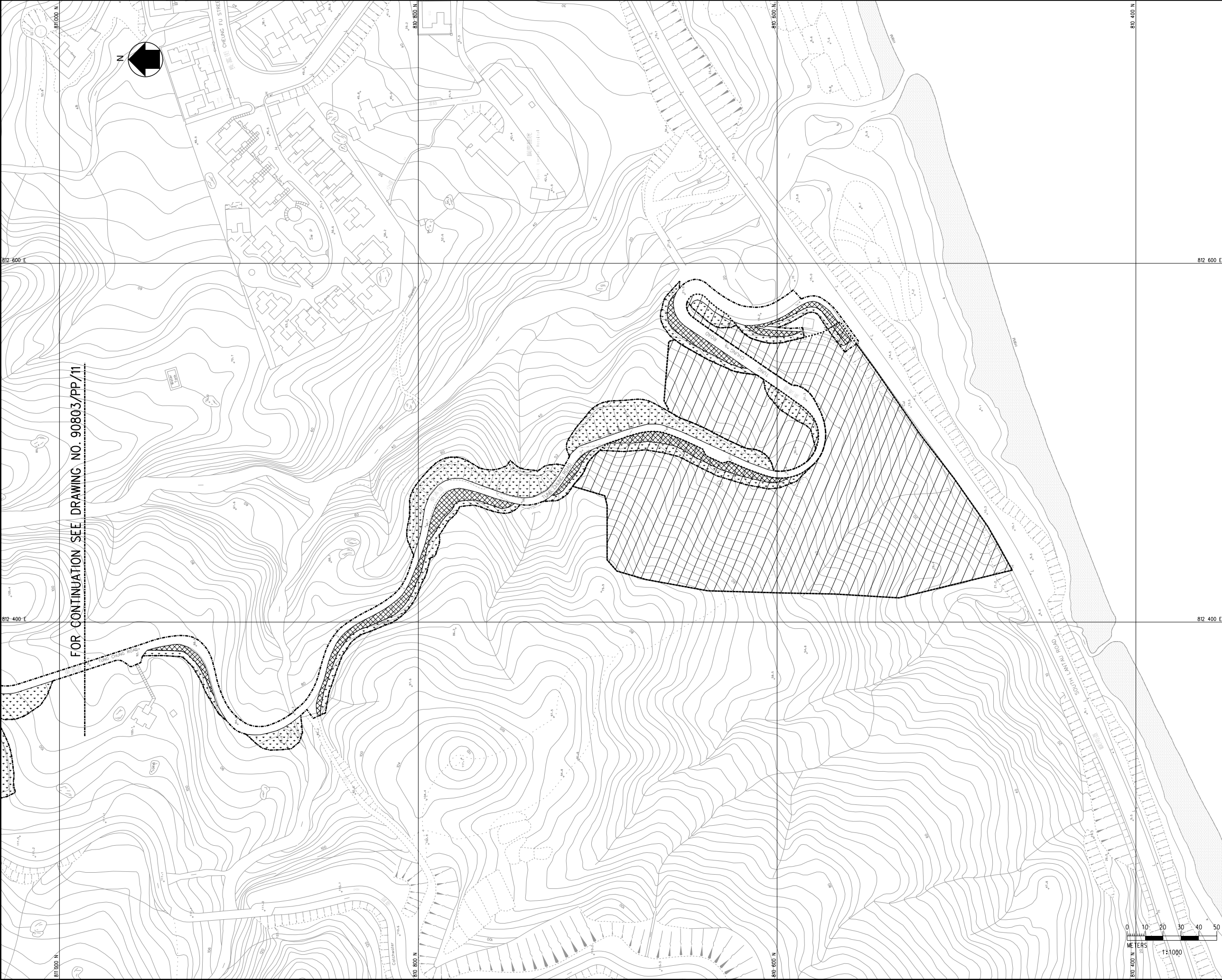
NOTE :

ANY NEWLY FORMED OR REHABILITATED SLOPE WHICH FOR GEOTECHNICAL REASONS NEEDS A HARD SURFACE COVER, SHALL RECEIVE GRASS HYDROMULCHING WITH GROUND COVER PLANTING TO CREATE A GREEN VEGETATIVE SURFACE.

FOR CONTINUATION SEE DRAWING NO. 90803/PP/07

FOR CONTINUATION SEE DRAWING NO. 90803/PP/12

-	-	-	-	-	-	-	-
REV.	ISSUE	STAT	AMENDMENT	BY	CHK.	APP.	DATE
CLIENT							
		HIGHWAYS DEPARTMENT THE GOVERNMENT OF THE HONG KONG SPECIAL ADMINISTRATIVE REGION					
AGREEMENT No.				CE 13/2001			
PROJECT							
IMPROVEMENT TO TUNG CHUNG ROAD BETWEEN LUNG TSENG TAU AND CHEUNG SHA INVESTIGATION AND PRELIMINARY DESIGN ASSIGNMENT							
TITLE							
PLANTING PLAN							
(SHEET 11 OF 12)							
<h1>Mouchel</h1> <p>Mouchel Asia Limited Consulting Engineers</p> <p>萬碩亞洲顧問工程公司</p>				DRAWN	AK	DATE	12.2001
				CHECKED	MP	DATE	12.2001
				APPROVED	MP	DATE	12.2001
				CAD FILE No.			PP-11
				SCALE			1:1000 IN A1 1:2000 IN A3
FIRST ISSUED		12.2001	DRAWING No.			REV.	
COPYRIGHT RESERVED 版權所有 不得翻印		90803/PP/11			-		




FOR CONTINUATION SEE DRAWING NO. 90803/PP/11

LEGEND :

- EXTENT OF WORKS AREA
- INFILL PLANTING WITH AREAS OF SCRUB WITH NATIVE WOODLAND TREE SPECIES
- NATIVE WOODLAND PLANTING
- GRASS HYDROSEEDING WITH GROUND COVER PLANTS
- INDIVIDUAL TREES (HEAVY STANDARD SIZE)
- AMENITY SHRUB PLANTING

NOTE :

ANY NEWLY FORMED OR REHABILITATED SLOPE WHICH FOR GEOTECHNICAL REASONS NEEDS A HARD SURFACE COVER, SHALL RECEIVE GRASS HYDROMULCHING WITH GROUND COVER PLANTING TO CREATE A GREEN VEGETATIVE SURFACE.

-	-		-						-
REV.	ISSUE STAT	AMENDMENT			BY	CHK.	APP.	DATE	
CLIENT									
		HIGHWAYS DEPARTMENT THE GOVERNMENT OF THE HONG KONG SPECIAL ADMINISTRATIVE REGION							
AGREEMENT No.									
CE 13/2001									
PROJECT									
IMPROVEMENT TO TUNG CHUNG ROAD BETWEEN LUNG TSENG TAU AND CHEUNG SHA INVESTIGATION AND PRELIMINARY DESIGN ASSIGNMENT									
TITLE									
PLANTING PLAN									
(SHEET 12 OF 12)									
Mouchel Mouchel Asia Limited Consulting Engineers 萬碩亞洲顧問工程公司					DRAWN	AK	DATE	12.2001	
					CHECKED	MP	DATE	12.2001	
					APPROVED	MP	DATE	12.2001	
					CAD FILE No.			PP-12	
					SCALE			1:1000 IN A1 1:2000 IN A3	
FIRST ISSUED		12.2001		DRAWING No.		90803/PP/12			
COPYRIGHT RESERVED 版權所有 不得翻印								REV.	
								-	